

Olympic National Park may eventually be the means of saving a nucleus of all of our anadromous fishes on the Pacific Coast as present safeguards are entirely inadequate.

Arthur S. Einarsen, 1938, Oregon State College

Fish shown on cover:
steelhead trout
mountain whitefish
coastal cutthroat trout
Chinook salmon
bull trout
sockeye salmon



For More Information

If you have questions about information in this guide, please contact:

Fisheries Management Division
600 East Park Avenue
Port Angeles, WA 98362
360-565-3081 or 3075

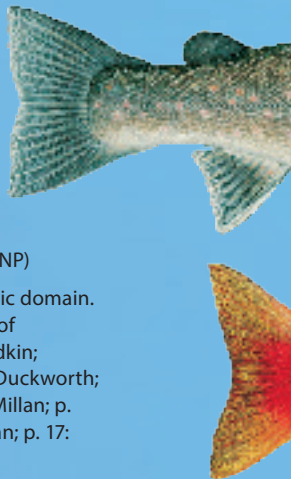
Written by Sam Brenkman (Olympic NP)

Designed by Carolyn Duckworth (Yellowstone NP) and Jerry Freilich (Olympic NP)

All illustrations and photos © by originator except NPS images, which are public domain.

Cover illustrations: Joe Tomelleri; p. 3: NPS; p. 4: Phil Kennedy ; p. 5, top: State of Washington, Depts. of Fish and Wildlife, and Ecology; p. 5, bottom: Steven Fradkin; p. 7: NPS; p. 8, map: NPS/Olympic GIS lab; p. 11: Frankie Collins-Lubin; p. 12: C. Duckworth; p. 14, illustration: Joe Tomelleri; p. 14–15, fish photos: Florian Graner, John McMillan; p. 15 (high lake): NPS; p. 16: Tony Overman, with permission of The Daily Olympian; p. 17: Dave Conca

Printed on recycled paper & vegetable ink May 2014



Olympic National Park

Fish & Shellfish Regulations



Effective
May 1–April 30
each year.

Please see
locally posted
regulation
changes and
visit the park's
website for the
most current
regulations.

[www.nps.gov/
olym/fishing.htm](http://www.nps.gov/olym/fishing.htm)



National Park Service

The Reason for Fishing Regulations

Protect Native Fish Populations
Provide Fishing Opportunities

Three primary objectives guide Olympic National Park’s fisheries management program:

- 1. Manage aquatic resources as an important part of the park ecosystem.
- 2. Preserve and restore native fishes and their habitats.
- 3. Provide recreational fishing opportunities for the enjoyment of park visitors, consistent with the first two objectives.

Three types of regulations protect native fish populations:

- 1. General (pages 6–7): Become familiar with the general regulations, which include information on seasons, licenses, legal gear, fish consumption advisories, closed waters, and size and possession limits.
- 2. Area Specific (pages 8–13): Become familiar with regulations for specific areas in the park.
- 3. Species Specific (pages 14–15): Become familiar with the different fish species commonly encountered in the park, their identification, and regulations specific to each species.

Introduction	3
Ecology & Economy	4
Aquatic Invasive Species	5
General Regulations	6–7
Map	8
Freshwater Fish Regulations	8–12
Marine Fish & Shellfish Regulations	13
Native Fish Descriptions	14–15
Fisheries Management	16
Frequently Asked Questions	17

Help preserve Olympic fisheries for the future.

Olympic National Park has . . .



- 12 major watersheds and more than 4,000 miles of rivers and streams.
- 600 high lakes, two large lakes, and more than 70 miles of intertidal habitats along the Pacific Coast.
- Lake Ozette—the third largest natural lake in Washington State.
- 31 native freshwater species from 11 different families of fish.
- At least 70 unique populations of Pacific salmon, trout, and char.
- 5 non-native fish species: brook trout, yellow perch, largemouth bass, yellow bullhead, and American shad.
- 5 fish species are on the federal threatened species list: bull trout, Puget Sound steelhead, Puget Sound Chinook salmon, Hood Canal summer chum salmon, and Lake

Geography

Olympic National Park is home to all salmon species native to the Pacific Northwest. Encompassing nearly one million acres of designated wilderness on the Olympic Peninsula of northwestern Washington, Olympic National Park is a designated World Heritage Site and Biosphere Reserve that contains one of the largest contiguous areas of relatively pristine habitat throughout the range of several west coast fish species. In fact, Olympic National Park supports some of the most extensive runs of wild salmon, trout, and char remaining in the Pacific Northwest.

On the west side of the park are major coastal watersheds that include the Bogachiel, Dickey, Hoh, Queets, Quinault, and Quillayute rivers. To the north are the Elwha, Graywolf, and Sol Duc rivers and to the east are the Dosewallips, Duckabush, Hamma Hamma, and North Fork Skokomish rivers. These rivers drain directly into the marine waters of the Pacific Ocean, Strait of Juan de Fuca, or Hood Canal/Puget Sound. In the park's rugged terrain that ranges in elevation from 8,000 feet to sea level are two large lakes—Lake Crescent, the crown jewel of the park, and Lake Ozette, the third largest natural lake in Washington State.

. . . great salmon threshed in the water all night long. . . . At every few yards was to be seen the remains of a fish where cougar, coon, otter, or eagle had made a meal.

Private Harry Fisher, along the Queets River
during 1890 O'Neil Expedition

Ecology & Economy

Olympic National Park's population of salmon species (salmonids) are critically important to the park's ecology. For example, they provide food for more than 130 species of aquatic and terrestrial wildlife species. The carcasses of spawned salmon may also contribute 20 to 40 percent of the phosphorus, nitrogen, and carbon in freshwater systems.

Olympic National Park has exclusive jurisdiction over recreational fisheries in the park. Fisheries biologists work with the State of Washington and eight treaty tribes each year to establish harvest and gear regulations. Fishing in Olympic National Park emphasizes the quality of recreational fishing rather than providing fish for human consumption. Anglers, in return, have the opportunity to fish for wild, hatchery, and non-native fish in a natural setting.

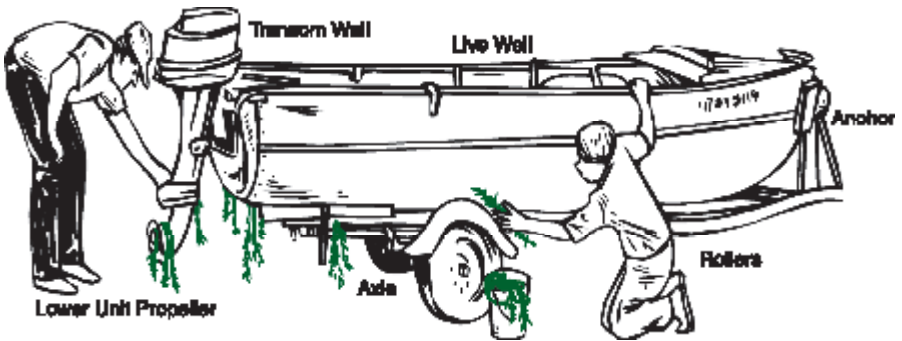
Recreational fishing has long been a popular activity on the Olympic Peninsula, and now is a multimillion-dollar industry for local communities. Within Olympic

National Park, virtually all of the waters support highly popular sport fisheries. This popularity is fostered by the park's proximity to the Seattle/Tacoma metropolitan area (100 miles away), where many of the rivers that still harbor salmonids are closed to fishing. The Seattle/Tacoma population has grown significantly over recent decades—about 20 percent from 1990 to 2000—a trend that is projected to continue. Because of this, fisheries managers expect recreational fishing to increase.

Salmon returning to Olympic National Park also are harvested outside of the park during most weeks of the year in economically important commercial and subsistence fisheries. Salmon have a significant role in the cultures of treaty tribes that surround the park: Elwha Klallam, Hoh, Jamestown S'Klallam, Makah, Queets, Quileute, Quinault, and Skokomish.

Queets River





PREVENT THE SPREAD OF AQUATIC INVASIVE SPECIES

Before you enter Olympic National Park and any time you move to another body of water within the park:

CLEAN YOUR BOAT

Mud, plants, and animals on watercraft, trailers or vehicles can cause the spread of invasive species such as milfoil, zebra mussels, and Quagga mussels. Invasive mussels cause millions of dollars of damage to boat and water systems by clogging pipes and engines. They also impact the native ecosystem and sport fisheries.

CLEAN YOUR GEAR

1. Remove ALL visible mud, plants, and fish from your boat, trailers, waders, boots, and nets.
2. DO NOT dump any water from other sources into Olympic National Park waters. Drain your boat hull and live well in a safe location away from all park surface waters.
3. NEVER empty bait or release fish into a body of water unless they came out of it.
4. CLEAN AND DRY EVERYTHING that comes in contact with water before entering a new body of water.

PRESERVE THESE SCENIC AND PROTECTED WATERWAYS

Lake Crescent



General Regulations

1 Fishing Season

All waters in Olympic National Park are closed to the removal of fish and shellfish (including freshwater crayfish and freshwater mussels) except as described on pages 8–12 (freshwater fish) and page 13 (marine fish & shellfish). All waters described on pages 8–12 are open to fishing from one hour before official sunrise to one hour after official sunset.

2 Fishing Licenses

- a. A Washington State Recreational Fishing License is NOT required to fish in Olympic National Park EXCEPT when fishing in the Pacific Ocean from shore. No license is required to harvest surf smelt.
- b. A Washington State catch record card is REQUIRED to fish for salmon or steelhead (see page 17).
- c. A Washington State Shellfish/Seaweed license is REQUIRED for harvest of shellfish from the Pacific Coastal Area. Harvest of seaweed, kelp, and unclassified species is prohibited (see Marine Fish and Shellfish Regulations, page 13).
- d. Fishing guides must annually apply for a commercial use authorization permit to conduct fishing trips in Olympic National Park. Please call 360-565-3007 for an application.

3 Legal Gear

- a. Recreational fishing in freshwater areas of Olympic National Park is restricted to artificial lures with a single point barbless hook except as described on pages 8-12.

- b. Anglers must only use a single rod, reel and line that are under immediate control.
- c. Seines, traps, drugs, explosives, and nets (except to land a legally hooked fish or dip-net smelt) are prohibited.
- d. Only knotless nets may be used to land fish.
- e. In marine waters, up to 2 barbed hooks may be used for non-salmonid species.

4 Fish Consumption Advisory

Locations: Mountain lakes (brook trout) and Lake Ozette (largemouth bass, yellow perch and northern pikeminnow).

Pollutant: Mercury. Some fish exceed the human consumption threshold for mercury.

The National Park Service recommends following the Washington Department of Health guidelines for safe consumption of recreationally caught fish, available at www.doh.wa.gov/ehp/oehas/fish/.

5 Boats & Rafts

Fishing from boats or other floating devices is permitted on the following rivers: Ozette, Queets below Tshletshy Creek, Hoh downstream from the launch site located ~½ mile from the park boundary near South Fork confluence, Hoh in the Pacific Coastal Area, Quinault below the North Shore Quinault River Bridge, Elwha below former Glines Canyon Dam site, and Quillayute and Dickey rivers. Motorized craft are only allowed on the Quinault below the North Shore Quinault River Bridge, in the park's coastal portions of the Quillayute, Dickey, and Hoh rivers (in the Pacific Coastal Area), and in Lake Crescent and Lake Ozette.

6 Waters Closed to Fishing

- The portion of Kalaloch Creek downstream from Highway 101 bridge and the area used for domestic water supply (as posted).
- Elwha River and its tributaries in Olympic National Park.
- Sol Duc River from 100 yards upstream to 250 yards downstream (or as posted) at the Salmon Cascades.

7 Bait

Bait is defined as any artificial or natural substance that attracts fish by scent and/or flavor. Most freshwater areas of Olympic National Park are managed as "Selective" or "Quality" fishing areas where bait is prohibited. Areas open to bait fishing are listed on pages 8–13.

Prohibited in all park waters:

- Possession of illegal bait.
- Using live or dead minnows, chub, or other freshwater bait fish.
- Chum broadcast, feed, or distribute bait (e.g., fish eggs, roe, or food).
- Digging for bait or harvesting intertidal organisms.

8 Salmon Size & Possession Limits

- 12-inch minimum size limit. All fish retained larger than 12 inches count towards the daily catch limit.
- Daily possession limit: 2 daily limits in fresh form.
- Hatchery steelhead and salmon may be caught and released until daily limit is retained.

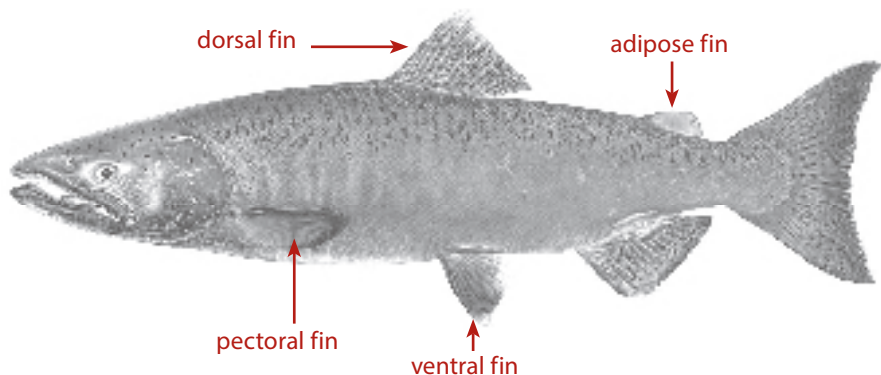
9 Identifying Hatchery Fish

Hatchery salmon and steelhead are identified by a healed scar where the adipose or ventral fin was removed (see below). Harvest is only allowed in areas and seasons listed on pages 8–12. Queets River hatchery steelhead are identified by a dorsal fin height of less than 2 inches (November 15 to February 28).

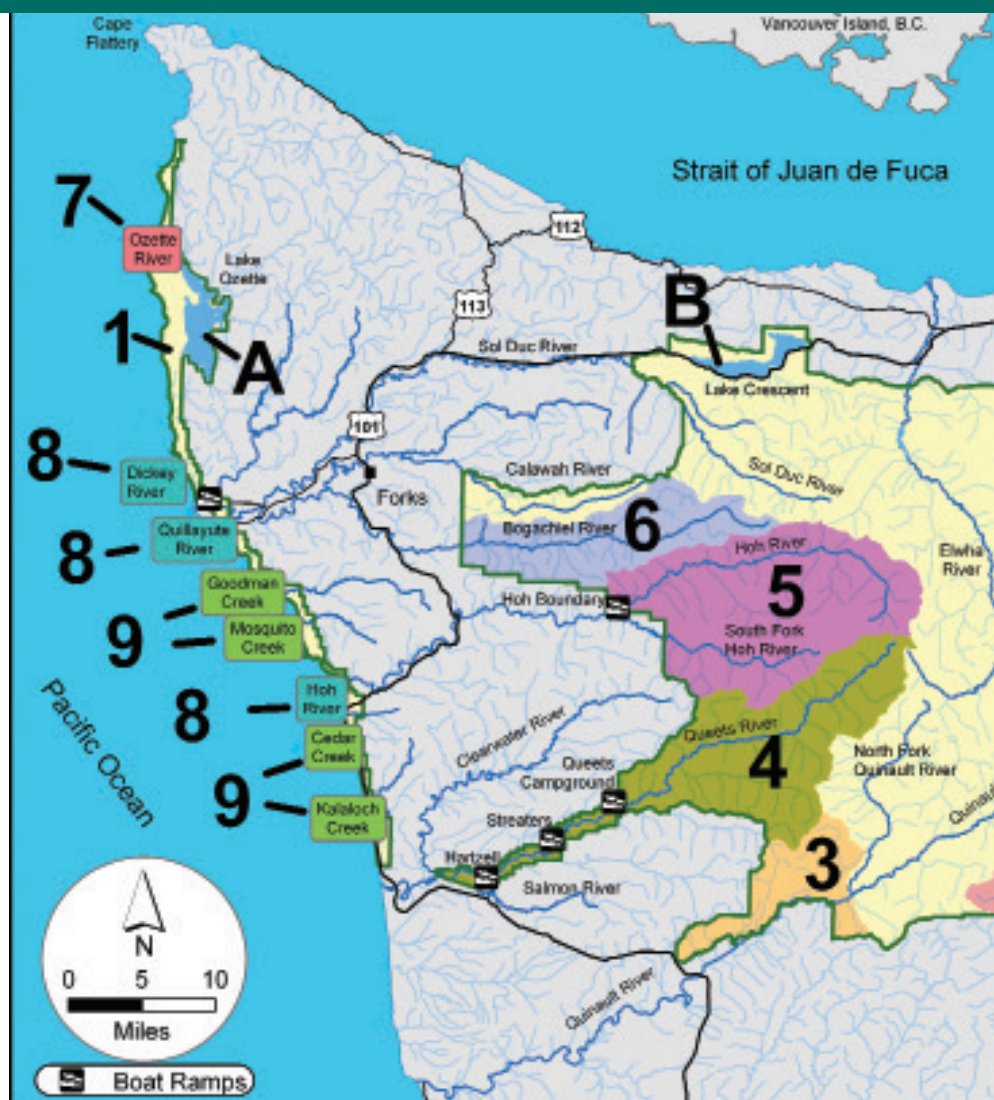
10 Catch & Release All Wild Fish

All wild steelhead (unmarked and identified by intact adipose fin) must be released in Olympic National Park. All other wild (unmarked) fish species must be released unless specifically allowed on pages 8–13.

Fishing for bull trout and Dolly Varden is prohibited in all park waters. They must be safely released if accidentally caught.



Drainages & Freshwater Fish Regulations



- Park Boundary
- Roads
- River or Stream

6 Regulation Zone Number (map & chart)



Boat Ramp



Zone	Drainages (Areas)	Season	Gear	Daily Limit
1	All beaver ponds, streams, and rivers not listed on this chart. Includes: Dosewallips, Duckabush, Graywolf, North Fork Sol Duc, Sol Duc, South Fork Calawah, Quinault (East Fork, North Fork, and mainstem above upper bridge).	Jun 1–Oct 31, 2019	Artificial lure, barbless single point hook	Catch-and-release except 2 adipose clipped hatchery steelhead may be retained
	Elwha River	CLOSED		
2	Skokomish River, North Fork	Jun 1–Sep 15, 2019	Artificial lure, barbless single point hook	Catch-and-release
3	Quinault River, upper bridge downstream to park boundary	Jun 1 2019–Mar 31, 2020	Artificial lure, barbless single point hook	Catch-and-release except 2 adipose clipped hatchery steelhead may be retained
4	Queets River, mainstem, <i>below AND above</i> Hartzell boat launch Catch Record Card Code 394	Jun 1-Aug 31, 2019	Artificial lure, barbless single point hook.	Catch-and-release except 2 adipose clipped hatchery steelhead may be retained
		Sep 1-Nov 30, 2019	BELOW HARTZELL: Bait allowed. One barbless hook with up to three points. ABOVE HARTZELL: Artificial lure, barbless single point hook.	Catch-and-release for all species except: *A total of 2 hatchery salmon may be retained, of which only 1 may be a Chinook. *Steelhead: 2 hatchery steelhead may be retained, defined as dorsal fin less than 2-1/8", adipose or ventral clipped.
		Dec 1, 2019 - Feb 29, 2020	BELOW HARTZELL: Bait allowed. One barbless hook with up to three points. ABOVE HARTZELL: Artificial lure, barbless single point hook.	Catch-and-release for all species except: *Steelhead: 2 hatchery steelhead may be retained, defined as dorsal fin less than 2-1/8", adipose or ventral clipped.
		Mar1, 2019-Apr 15, 2020	Artificial lure, barbless single point hook.	Catch-and-release except 2 adipose clipped hatchery steelhead may be retained
	Salmon River Catch Record Card Code 396	Jun 1-Aug 31, 2019	Artificial lure, barbless single point hook.	Catch-and-release except 2 adipose clipped hatchery steelhead may be retained.
		Sep 1-Nov 30, 2019	Bait allowed. One barbless hook with up to three points.	Catch-and-release for all species except: *A total of 2 hatchery salmon may be retained, of which only 1 may be a Chinook. *Steelhead: 2 hatchery steelhead may be retained, defined as dorsal fin less than 2-1/8", adipose or ventral clipped.
		Dec 1, 2019 - Feb 29, 2020	Bait allowed. One barbless hook with up to three points.	Steelhead: 2 hatchery steelhead may be retained, defined as dorsal fin height less than 2-1/8", adipose clipped, or ventral clipped.
5	Hoh River and South Fork Hoh River	June 1, 2019–April 15, 2020	Artificial lure, barbless single point hook. Fly fishing ¼ mile below Hoh Campground to Boat Launch above South Fork Hoh confluence	Catch-and-release except 2 adipose-clipped hatchery steelhead may be retained
6	Bogachiel River	June 1, 2019–April 15, 2020	Artificial lure, barbless single point hook	Catch-and-release except 2 adipose clipped hatchery steelhead may be retained
7	Ozette River	Aug 1, 2019–Feb 29, 2020	Artificial lure with barbless single point hook	Catch-and-release except 2 adipose clipped hatchery steelhead may be retained

Zone	Drainages (Areas)	Season	Gear	Daily Limit
8	Dickey River Mouth	June 1, 2019–April 30, 2020	Identical to State regulations. See State gear regulations for this river from the park boundary upstream to the confluence of the East and West Forks	Release all wild steelhead, salmon, and trout regardless of size. See State regulations for daily limits of hatchery salmon and steelhead from the park boundary upstream to the confluence of the East and West Forks
	Hoh River Mouth	Jun 1-Aug 31, 2019 CLOSED Sep 1-15, 2019 Sep 16, 2019-Apr 15, 2020	Identical to State regulations. See State gear regulations for this river from the park boundary upstream to Dept. of Natural Resources Oxbow Campground boat launch	Release all wild steelhead, salmon, and trout regardless if size. See State regulations for daily limits of hatchery salmon and steelhead from the park boundary upstream to Dept. of Natural Resources' Oxbow Campground boat launch
	Quillayute River	Year-round except: CLOSED Mondays & Tuesdays from Sep 1-Oct 1; Oct 28-29, 2019 CLOSED Mondays Oct 7-21, 2019	Identical to State regulations. See State gear regulations for this river from the park boundary upstream to the confluences of the Sol Duc and Bogachiel Rivers	Release all wild steelhead, salmon, and trout regardless of size. See State regulations for daily limits of hatchery salmon and steelhead from the park boundary upstream to the confluences of the Sol Duc and Bogachiel Rivers
9	Cedar, Goodman, Kalaloch, and Mosquito Creeks (Pacific Coastal Area)	June 1, 2019 – February 29, 2020	Artificial lure with barbless single point hook	Catch & release Can retain 2 hatchery steelhead
A	Lake Ozette	Last Saturday in April–October 31, 2019	Artificial lure with barbless single point hook	Catch & release EXCEPT no daily, size, or possession limits for yellow perch, largemouth bass, pikeminnow, and bullhead See Fish Consumption Advisory, page 6, item 4
B	Lake Crescent	June 1–October 31, 2019	Artificial lure with barbless single point hook; 2 ounce weight restriction	Catch & release
	High elevation lakes (above 1,300 ft)	Last Saturday in April–October 31, 2019	Bait, treble, and barbed hooks allowed	A combined total of 5 rainbow and/or cutthroat trout, no minimum size limit
		Last Saturday in April–October 31, 2019	Bait, treble, and barbed hooks allowed	No daily, size, or possession limits for brook trout See Fish Consumption Advisory, page 6, item 4
	Irely Lake	Last Saturday in April–October 31, 2019	Artificial lure with barbless single point hook	Catch & release

Kalaloch Creek outlet



Mussels and barnacles



Marine Fish & Shellfish Regulations

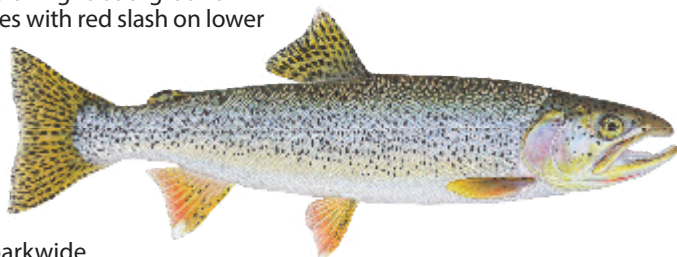
Fish Species	Minimum Size	Daily Limit	Season
Herring/sardine/sandlance/ anchovy/surf smelt	None	10 pounds all species combined	Year-round
Lingcod	22"	2 but no more than 12 bottom-fish total, regardless of species	April 16–Oct. 15
Rockfish	None	10 BUT release all yelloweye & canary rockfish No more than 12 bottomfish total, regardless of species	Year-round
Greenling	None	15 BUT no more than 12 bottom-fish total, regardless of species	Year-round
Cabezon	18"	1 BUT no more than 12 bottom-fish total, regardless of species	Year-round
Surfperch	None	12 BUT no more than 12 bottom-fish total, regardless of species	Year-round; bait and up to 2 single barbed hooks may be used
All other intertidal fish (unclassified)		CLOSED	

Shellfish Species	Minimum Size	Daily Limit	Season
Goose neck barnacles	None	10 pounds whole or 5 pounds stalks	Nov. 1–March 31
Horse clams	None	7 (must keep first 7)	Nov. 1–March 31
Littleneck/butter/manila clams/cockles	1½"	10 pounds in shell or 40 TOTAL clams	Nov. 1–March 31
Mussels	None	10 pounds in shell	Nov. 1–March 31
Razor clams	None	15 (must keep first 15)	To Be Announced
Dungeness crab	6"	6 males only BUT NO soft-shell crabs	Pots: Dec. 1–Sept. 15 Other gear: year-round
Red rock crab	5"	6 of either sex BUT NO soft-shell crabs	Pots: Dec 1.–Sept. 15 Other gear: year-round
Abalone, geoducks, octopus, oysters, sand shrimp, scallops (all species), sea cucumbers, sea urchins (all species), shrimp (all species), all other intertidal invertebrates (unclassified)		CLOSED	
No harvest of any fish or invertebrates for bait			

Identify Olympic's Native Fish

Cutthroat Trout—CT

- dark spots on light background
- only species with red slash on lower jaw



Distribution: parkwide

Regulation: catch & release only; see regulations for Pacific Coastal Area

Bull Trout—BT

- back and sides olive-green to brown with cream spots
- light spots on dark background
- clear dorsal fin



Distribution: parkwide except Bogachiel, Dosewallips, Duckabush, Ozette

Regulation: fishing prohibited

Steelhead Trout—ST

- no red slash on lower jaw
- reddish stripe often along the side

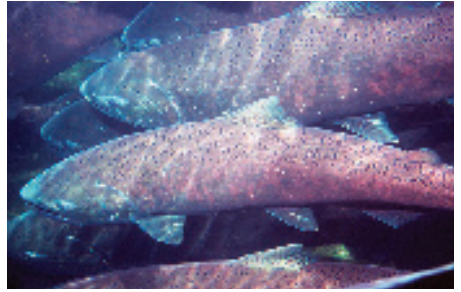


Distribution: parkwide except Dosewallips, Duckabush, North Fork Skokomish

Regulation: catch & release only for all wild steelhead; can keep 2 hatchery steelhead
See page 7, item 9 for details about identifying hatchery steelhead.

Chinook Salmon—CH

- black gums around the teeth and lower jaw
- spots on both lobes of the tail



Distribution: parkwide except Dosewallips, Duckabush

Regulation: catch & release only; see regulations for Pacific Coastal Area

Mountain Whitefish—MW

- small mouth oriented towards stream bottom
- no teeth
- large scales



Distribution: parkwide except Dosewallips, Duckabush, Elwha, Ozette

Regulation: catch & release only



Non-native Fish

Fisheries biologists at Olympic National Park are increasingly concerned about the effects of non-native fish on native fish communities. Mountain lakes had no fish until they were stocked between 1913 and 1975. At least 10 different fish species were planted via helicopter, airplane, horses, and by backpackers. More than 14.5 million fish were planted into Lake

Crescent alone. Today, non-native brook trout and non-indigenous rainbow trout occur in 5 of 12 major watersheds in the park. These non-native fish significantly threaten native amphibians and fish, particularly the federally threatened bull trout.

Olympic National Park's Fishery

Management Challenges

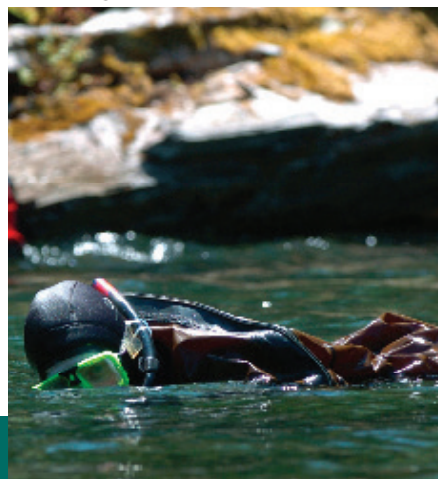
Fishery managers in Olympic National Park face one consistent challenge: protecting and conserving native fish species while providing recreational fishing. This dual mission has led to a long history of apparently contradictory fisheries management activities:

Hatcheries: On the Olympic Peninsula, hatcheries release millions of hatchery salmonids each year to enhance recreational and commercial fisheries, often without regard to their impacts on native fish. Hatchery fish interbreed with wild fish, thus altering wild populations, reducing fitness, and reducing genetic variation among populations.

Harvest: Recreational, commercial, and subsistence fisheries influence the number of adult salmonids returning to Olympic National Park streams and rivers.

Hydroelectric dams: Dams on the North Fork Skokomish influence fish populations. Two dams on the Elwha were removed to restore ecosystem processes and Pacific salmonids. Elwha River restoration was one of the largest such projects in the National Park Service.

Searching for salmon



Monitoring Fish Populations

Fisheries biologists at Olympic National Park monitor seasonal and annual trends in fish populations using these methods:

Redd surveys: Biologists walk along rivers and creeks counting salmon nests to determine the numbers of returning spawners.

Snorkel surveys: Two divers float downstream and count each fish species during the summer in eight rivers.

Angler interviews: Biologists interview anglers to estimate fishing effort and catch per hour for various fish species.

Radiotelemetry studies: Biologists implant radio transmitters into fish and track their migrations using fixed data stations, manual tracking, and aerial surveys.

Genetic research: Biologists collect and analyze fish fin tissues to determine uniqueness of populations and hybridization between hatchery and wild fish.

Fish pathology: National Park Service and U.S. Fish and Wildlife Service biologists share data about parasites, viruses, and bacteria that threaten native fish species.

This monitoring allows fisheries managers to detect trends in high-priority species, non-native and hatchery fish, and federally-listed fish. They also use the data to improve harvest management, fishing regulations, and habitat restoration.

Razor clam stock assessments: Biologists survey Kalaloch Beach to determine the number of razor clams. Data are shared with the State and Treaty Tribes to determine harvest opportunities.

Frequently Asked Questions

Where can I see salmon and steelhead?

- Big Creek, Quinault River – sockeye salmon (Nov-Dec) near bridge crossing the stream.
- Sol Duc River – summer coho salmon (Sept-Oct) and steelhead (Apr) at the Salmon Cascades exhibit.
- Hoh Visitor Center – coho salmon (Nov-Jan).

Do I need a State fishing license in Olympic National Park?

No, unless you are fishing the Pacific Ocean from shore.

Do children need a license?

No, they do not need a fishing license to fish in Olympic National Park.

Do I need to fill out a State catch record card?

A Washington State catch record card is required for adults and children if fishing for salmon or steelhead. A catch record card specific to waters in Olympic National Park is available from Washington State Department of Fish & Wildlife license dealers at no cost. Salmon or steelhead that are caught and released do not need to be recorded. The catch record card requires a location code for each retained fish. Location codes for waters in Olympic National Park are:

Bogachiel River (398), Calawah River, South Fk (400), Cedar Creek (311), Dickey River (402) Goodman Creek (345), Hoh River, Mouth (350) Hoh River, Upper (348), Hoh River, South Fk (352), Kalaloch Creek (369), Mosquito Creek (373), Ozette River (388), Queets River (394) Quillayute River (404), Quinault River (412) Salmon River (396), Skokomish River, North Fk (834), Sol Duc River & North Fk (406)

How can I help the park's fisheries?

- Learn to identify fish species.
- Keep all fish that you can confirm are hatchery-raised (see page 7).
- Retain all brook trout.
- Release all wild fish, following the guidelines below.



Releasing a Hoh River wild steelhead

Handling & Releasing Fish

Please follow these guidelines when handling and releasing fish:

- Land the fish as quickly as possible to minimize the fish's fatigue.
- Leave the fish in the water while removing the hook. Do not drag the fish across land.
- Wet your hands and do not squeeze or hold the fish by the eyes or gills
- If the fish is hooked deeply, cut the line and leave the hook in.
- Safely release fish in quiet water near point of capture.